



PID Controller with LCD Display



N1050



Alphanumeric LCD Display

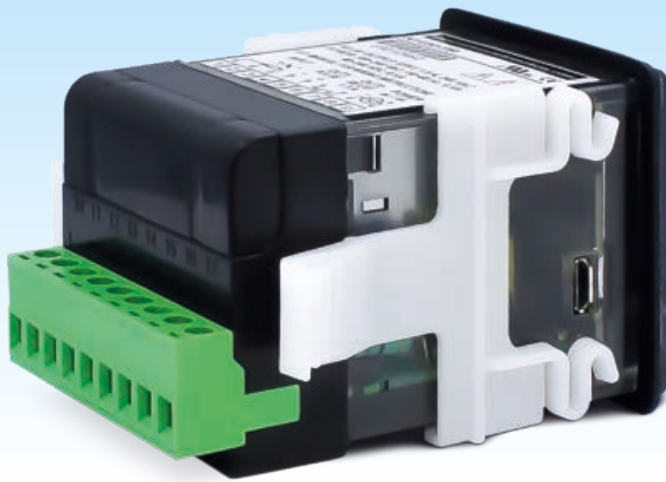
- High contrast multicolor LCD display
- Distinguished multi-angle viewing
- Compact depth for restricted space
- Elegant design to machines
- Ramp and Soak program
- Timer function

N1050 is an advanced high performance PID temperature controller featuring a vivid LCD display in a modern design package. It combines the proven robustness of **NOVUS** PID algorithm with a large and bright easy-to-read multicolor 11-segment LCD display with alphanumeric mnemonics and crystal clear status signaling.

Besides the PID auto-tuning capability, **N1050** outputs PWM control mode through pulse or relay. Up to three optional output relays can be selected. It also features 5 ramp-and-soak profile programs, soft start output and timer function which complement the advanced features of the

controller. With password protected, all parameters are configurable by the display menu, via USB port or optional RS485 Modbus interface.

Easy to install and maintain due to its detachable connector, **N1050** offers the lowest power consumption in the market. Housed in anti-flame material, it has 48x48 mm (DIN 1/16) format and low profile front panel. Suitable for hostile environments, it complies with standard EMC regulations, providing robustness and reliability including untapped temperature applications.



Detachable Connector

Easy commissioning



Lowest Power Consumption

Use just the energy needed



Protection and Safety

Anti-flame material
UL94 V-2



USB Configurable

Device configurable via USB with **QuickTune** free software

Technical Specifications

Display	Alphanumeric 11-segment LCD type, high contrast multi viewing angle
Input Type	Thermocouple J, K T, S and Pt100
PID Features	PWM Auto tune
Control Action	Heat or cool
Output Control	1 pulse for SSR and relay 3 relays (optional) Analog (optional)
Ramp & Soak	5 programs with 4 segments
Sampling Period	100 ms
Communication	RS485 Modbus RTU (optional)
Power Consumption	Max. 6 VA

Special Functions	Soft Start PID loop break alarm Ramp and soak event 2 alarms (7 alarm types) Timer function
Configuration	Software QuickTune , via USB (micro-B type)
Certifications	CE, UL and cUL
Power Supply	100-240 Vac/dc or 12-24 Vdc (optional)
Operating Conditions	Temperature: 0 to 50 °C (32 to 122 °F) Humidity: 80 % @ 30 °C (86 °F)
Front Panel	IP65 Polycarbonate (PC) UL94 V-2
Enclosure	48x48 mm (DIN 1/16) ABS+PC UL94 V-0

20230117 - FL N1050 - EN