

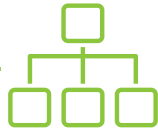


Industrial IoT Gateway

DigiRail IoT



**INDUSTRIAL
DATA FOR IOT
PLATFORMS**



**INTEGRATION WITH
LEGACY MODBUS
NETWORKS**



**GUARANTEED
DATA DELIVERY**



EASY SETUP

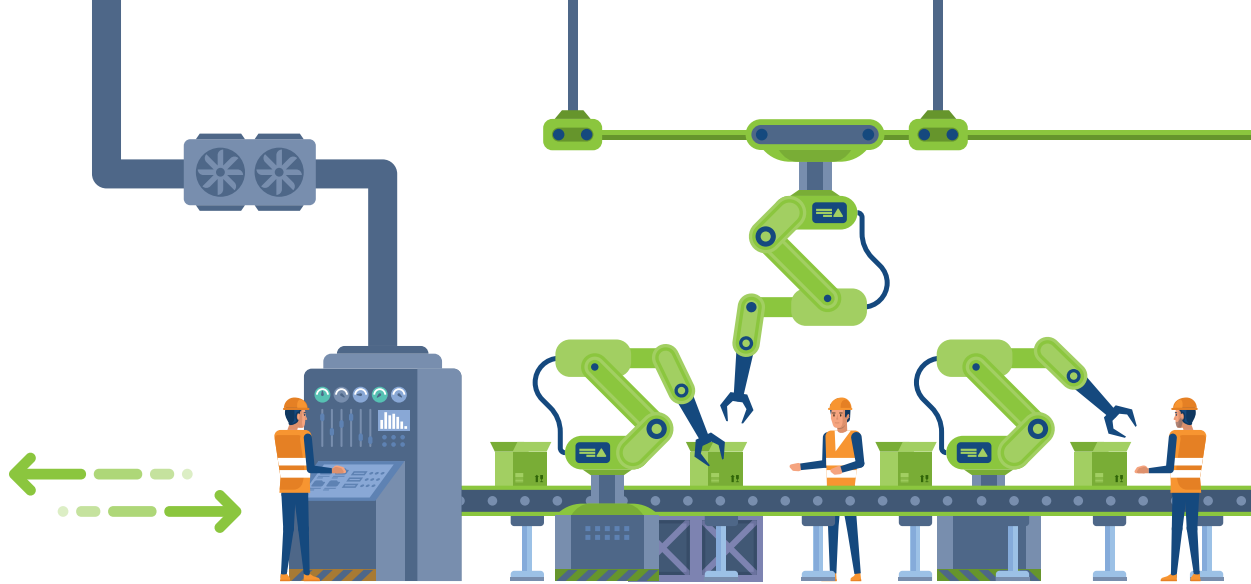


**COMPATIBLE WITH
FDA CFR 21 AND GMP**

DigiRail IoT is a **gateway with inputs and outputs** that meets the demands of companies seeking to connect their sensors and actuators to the Internet of Things. **DigiRail IoT** is available in two versions: **Wi-Fi** and **Ethernet**. The Wi-Fi version has a range of up to 100 meters, while the Ethernet version offers transmission speeds of up to 100 Mbps.

DigiRail IoT provides an **RS485** connection for operation as a gateway, modbus master or slave, with the ability to monitor and publish up to 8 variables from other devices, via the **MQTT** protocol or **Modbus TCP/IP**. Its **message management system** also guarantees security in data traffic. It is configured using **NXperience** software and is connected to the main market clouds, such as Google Cloud, Microsoft Azure, Amazon AWS, **NOVUS Cloud** or any other compatible IoT cloud platform. It also offers support, via **NXperience Trust** software, for validatable systems according to **FDA 21 CFR part 11 and GMP** (Good Manufacturing Practice).

Topology



Technical Specifications

Input Channels	6 digital inputs and 2 analog inputs	
Remote Channels	8 configurable channels of up to 64-bits.	
Compatible Analog Signals	0-5 V, 0-10 V, 0-20 mA, 4-20 mA	
Analog Input Resolution	15 bits	
Analog Channels Input Impedance	mA: 15 Ω + 1,5 V V: 1 MΩ	
Accuracy	0.15 % (F.S.)	
Digital Input	Logical Level	Logical level "0": < 0.5 V Logical level "1": > 3 V
	Maximum Voltage	30 V
	Input Impedance	5 kΩ
	Input Current @ 30 Vdc (Typical)	7 mA
	Maximum Frequency (Square wave)	Dry Contact: < 10 Hz PNP: 3 kHz NPN: 3 kHz
Digital Output	Minimum Pulse Length	Dry Contact: 50 ms PNP: 150 us NPN: 150 us
	2 digital NPN outputs Maximum current that can be switched at the output: 700 mA	
Buffer Capacity	<ul style="list-style-type: none"> • 7000 logs with 1 analog input enabled* • 1800 logs with 2 analog inputs enabled and the 6 digital inputs in Count mode* 	
Communication Interfaces	DigiRail IoT – ETH	<ul style="list-style-type: none"> • USB 2.0 Interface • Ethernet Interface (10/100 Mbps) with RJ45 connector • RS485 communication interface with Modbus RTU protocol in Gateway mode
	DigiRail IoT – WRL	<ul style="list-style-type: none"> • USB 2.0 Interface • Wi-Fi Interface (802.11 b/g/n 2.4 GHz), supporting WPA-Personal (PSK) WPA/WPA2 TKIP/AES/TKIP and AES encryption • RS485 communication interface with Modbus RTU protocol in Gateway mode

LEDs	<ul style="list-style-type: none"> • 1 x Status LED • 1 x Local Network Connection LED • 1 x Broker MQTT Connection LED 	
Software	NXperience (via USB or TCP/IP network for desktops and notebooks).	
Power Supply	Power Supply	Wi-Fi Model: Consumption: 70 mA @24V Consumption: 160 mA @12V Ethernet Model: Consumption: 50 mA @24V Consumption: 120 mA @12V
	Batteries	CR2032 battery for internal clock retention
Dimension	129 mm x 142 mm x 38 mm	
Mounting	DIN rail or screw mounting.	
Environment	Operating Temperature: -20 to 60 °C (-4 to 140 °F) Storage Temperature: -20 to 60 °C (-4 to 140 °F) Humidity: 5 to 95 % RH (without condensation)	
Housing	ABS+PC	
Protection Index	IP20	
Certification	ANATEL (09260-20-07089), CE, UKCA, FCC, Compatible with IEC 60068-2-6 (2007), Contains FCC ID: 2ADHKATWINC1500, Contains IC: 20266-WINC1500PB.	

* None of the cases consider event log.